

English



**Corvatsch 3303**  
**Diavolezza 2978**  
**Lagalb 2893**

# Summer Guide 2019

FAIRY-TALE MOUNTAIN SCENERY



# CONTENTS

<b>◆ FACTS &amp; FIGURES</b>	Three mountains	3
	The location	4
	Operating dates & timetable	6
	Tickets & Prices	7
	Mountain Railways included	10
	Hiking map	12
<b>◆ CORVATSCH</b>	Corvatsch	14
	Stunning hikes	15
	Panoramic Trail	16
	Fun & Family	17
	Water Trail	18
	Via Gastronomica	20
	Fine food	22
<b>◆ DIAVOLEZZA</b>	Diavolezza	26
	Stunning hikes   Bernina Diavolezza Express	27
	Piz Trovat	28
	Bernina Glaciers	29
	Glacier hike	30
	Gletschertrekking	31
	Berghaus	32
	Fine food	34
	Jacuzzi	35
<b>◆ DIVERS</b>	Events summer 2019	36
	Preview winter 19/20	37
	Snow Deal	38
	Terms and conditions & legal notice	39
	Contact	40

Corvatsch, Diavolezza, Lagalb

# Three mountains, three fabulous beings

## FAIRY-TALE MOUNTAIN SCENERY



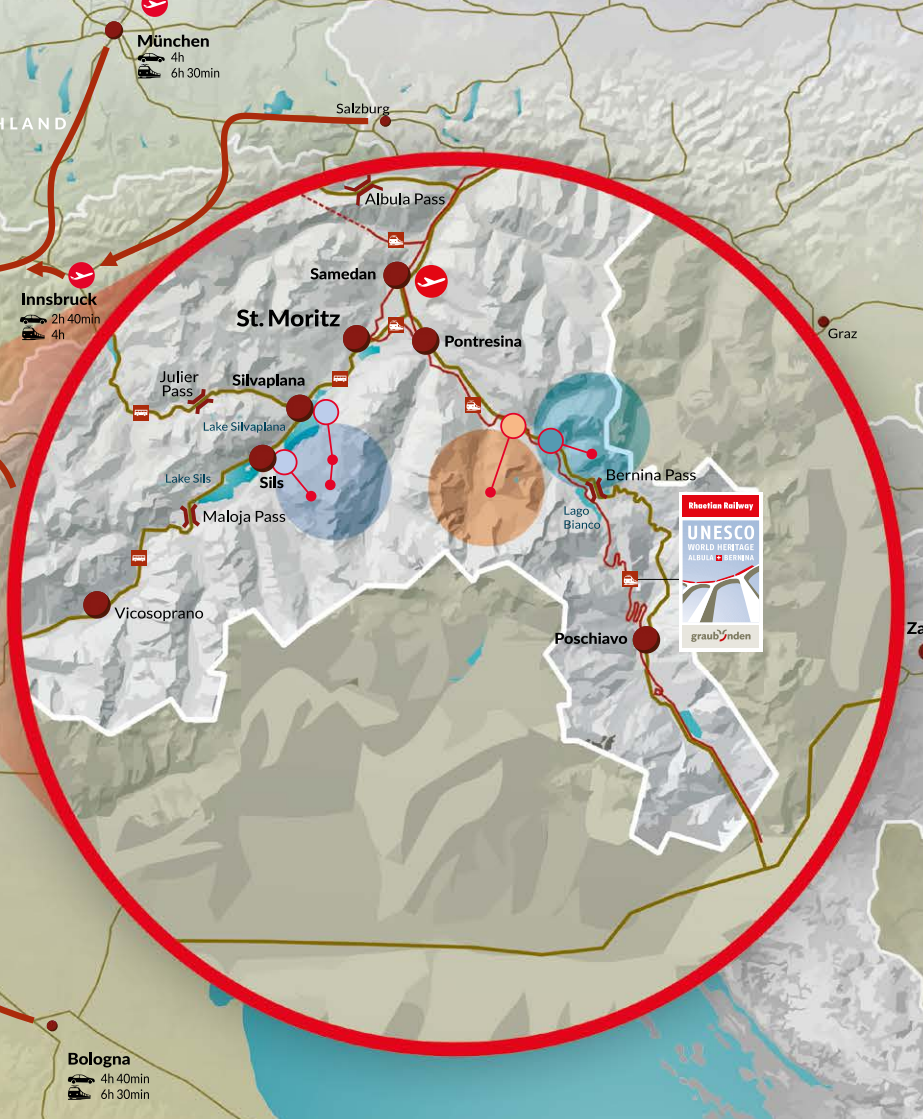
What a combination! **Corvatsch**, the large raven. Smart, breathtaking and free as a bird. **Diavolezza**, the she-devil. Passionate, icy hot and devilishly beautiful, like flames in the snow. And **Lagalb**, the white lake. Unspoilt, magnificent, perfect for adventures on water and ice.

The three cable cars are all in the Upper Engadin, located around the famous Bernina massif with the 4049 m high Piz Bernina at its heart – the only 4000 m peak in the Eastern Alps. On the western side of the Piz Bernina towers the mighty Corvatsch, while the gentler Diavolezza and Lagalb (winter only) – the sports fans' favourite – are to the east. The villages of Sils, Silvaplana, St. Moritz and Pontresina are part of this fairy-tale mountain scenery, along with the Bernina Pass.

Whether it's winter or summer, whether you are in search of engaging activities, fine food or relaxation – everyone will find what they are looking for. The cable cars run 365 days a year, 7 months in winter and 5 months in summer – offering breathtaking views on the Piz Bernina from different perspectives. Guests can stay overnight at the Berghaus Diavolezza for 11 months of the year.







München

4h  
6h 30min

Salzburg

Albula Pass

Samedan

St. Moritz

Pontresina

Graz

Innsbruck

2h 40min  
4h

Julier Pass

Silvaplana

Lake Silvaplana

Lake Sils

Sils

Maloja Pass

Bernina Pass

Lago Bianco

Vicosoprano

Poschiavo



Bologna

4h 40min  
6h 30min

# OPERATING DATES & TIMES



## SURLEJ – MURTËL (SECTION 1)

every 20 minutes

15.06.19 – 18.10.19

06.07.19 – 18.08.19



**FIRST**

**LAST**

08:25

16:45



**LAST**

17:05

17:25



## MURTËL – CORVATSCH (SECTION 1)

every 20 minutes

15.06.19 – 18.10.19

06.07.19 – 18.08.19



**FIRST**

**LAST**

08:37

16:37



**LAST**

16:57

17:17



## SILS – FURTSCHELLAS

every 30 minutes

22.06.19 – 18.10.19

06.07.19 – 18.08.19



xx:00

**FIRST**

xx:30

**LAST**

08:30

16:30



xx:10

**ERSTE**

xx:40

**LAST**

08:40

17:05

08:30

17:00

08:40

17:25



## DIAVOLEZZA

every 20 minutes

06.05.19 – 18.10.19

22.06.19 – 18.08.19



**FIRST**

**LAST**

08:20

17:00



**ERSTE**

**LAST**

08:20

17:00

08:20

17:20

08:20

17:20



# TICKETS & PRICES

**ENGADIN HIKING PASS\*** incl. public transportation  
valid for all open mountain railways and cableways in Engadin St. Moritz

Tage	2	3	4	5	6
Adults (≥18)	94.-	136.-	173.-	205.-	233.-
Youth (13-17)	62.70	90.70	115.30	136.70	155.30
Children (6-12)	31.30	45.30	57.70	68.30	77.70

**PUBLIC TRANSPORT AREA OF VALIDITY (BUS, RhB)**

Maloja – Cinuos-chel / Brail, Samedan – Pontresina, St. Moritz – Alp Grüm, Bever–Spinas

**MOUNTAIN RAILWAYS SUMMER PASS\*** excl. public transportation  
valid for all open mountain railways and cableways in Engadin St. Moritz

Adults (≥18)	331.-
Youth (13-17)	220.70
Children (6-12)	110.30

**\*REDUCTIONS**

No reductions are granted for the Engadin Hiking Pass or the Mountain Railways Summer Pass for holders of the SBB Half-Fare or GA travelcards. Junior and Grandchild travelcards are also not accepted.

All prices are in CHF. Prices, services and offers are subject to change.

## SINGLE TRIPS FOR PEDESTRIANS excl. public transportation



### **SURLEJ – MURTÈL 1st SECTION**

Adults (≥ 16)

Children (6 – 15), Half-Fare & GA



29.–  
14.50



21.–  
10.50



43.–  
21.50



### **MURTÈL – CORVATSCH 2nd SECTION**

Adults (≥ 16)

Children (6 – 15), Half-Fare & GA



19.–  
9.50



16.–  
8.–



24.–  
12.–



### **SURLEJ – CORVATSCH**

Adults (≥ 16)

Children (6 – 15), Half-Fare & GA



45.–  
22.50



25.–  
12.50



60.–  
30.–



### **SILS – FURTSCHELLAS**

Adults (≥ 16)

Children (6 – 15), Half-Fare & GA



23.–  
11.50



19.–  
9.50



36.–  
18.–



### **DIAVOLEZZA**

Adults (≥ 16)

Youth (13–17)

Children (6–12)



25.50  
17.–  
8.50



25.50  
17.–  
8.50



36.–  
24.–  
12.–

## SPECIALS

### **ASCENT / DESCENT, INCL. LUNCH (SURLEJ - CORVATSCH)**

in the Restaurant 3303

in the Restaurant 3303 with Half-Fare / GA

CHF 71.–

CHF 49.–

### **ASCENT / DESCENT, INCL. SUNDAY BRUNCH (SURLEJ - CORVATSCH)**

in the Restaurant 3303

in the Restaurant 3303 with Half-Fare / GA

Brunch only

CHF 70.–

CHF 60.–

CHF 40.–

### **ASCENT / DESCENT, INCL. LUNCH (SILS - FURTSCHELLAS)**

in the La Chüdera restaurant

in the La Chüdera restaurant with Half-Fare / GA

Via Gastronomica

CHF 50.–

CHF 40.–

CHF 52.–

### **ASCENT / DESCENT, INCL. LUNCH (DIAVOLEZZA)**

at Berghaus Diavolezza, in the restaurant Bellavista or Palù

CHF 50.–



## SPECIAL TICKETS excl. public transportation

### CORVATSCH HIKING PASS

**SURLEJ – MURTÈL – CORVATSCH** ▲ **CORVATSCH – MURTÈL** ▼

Adults (≥ 16)

CHF 52.–

Children (6 – 15), Half-Fare & GA

CHF 26.–

### CORVATSCH ROUNDTrip TICKET

**SURLEJ – MURTÈL** ▲ **FURTSCHELLAS – SILS** ▼ OR

**SILS – FURTSCHELLAS** ▲ **MURTÈL – SURLEJ** ▼

Adults (≥ 16)

CHF 43.–

Children (6 – 15), Half-Fare & GA

CHF 21.50

### BIKE TRANSPORTATION CORVATSCH (Diavolezza no bike transport)

Bike pass Corvatsch, single trip

CHF 8.–

Bike transport on the section 1 only (Surlej-Murtèl) and  
only on the first cable car at 8:25am and from 4:25pm.

### GROUP DISCOUNTS

Group of 10 persons or more receive a 10% reduction and school classes a 30% reduction.

### DISCOUNTS FOR CORVATSCH, FURTSCHELLAS AND DIAVOLEZZA

**Corvatsch and FurtscHELLas** accept the SBB Half-Fare travelcards, SBB GA travelcards (50% discount), Reka-Checks, Swiss Travel Pass, Swiss Travel Pass Flex and SBB Junior Card. Children ride for free with the Junior Card if accompanied by a parent.

**Diavolezza** only accepts Reka-Checks.

### IN THE FAIRY-TALE MOUNTAIN SCENERY YOUR DOG TRAVELS FREE OF CHARGE.

All prices are in CHF. Prices, services and offers are subject to change.



# MOUNTAIN RAILWAYS INCLUDED

**Ride the mountain railways for free in all of the Upper Engadin: this attractive offer is available at over 100 hotels and 140 holiday apartments.**

In summer, hotel and holiday apartment guests can travel on the mountain railways and cablecars free of charge. This special offer is valid for stays of two nights or more at over 100 hotels and 140 holiday apartments in the valley. Some of the hotels and holiday apartments also offer their guests free travel on local public transport, as well as free mountain bike transport.

## MOUNTAIN TRANSPORT FACILITIES

Furtschellas, Sils  
Corvatsch, Silvaplana  
St. Moritz mountain railways  
Piz Nair, St. Moritz  
Suvretta, St. Moritz  
Signal, St. Moritz  
Celerina mountain railways  
Muottas Muragl, Samedan  
Alp Languard, Pontresina  
Diavolezza, Pontresina

**VALID: 01.05.19 – 31.10.19 (without use of slopes during ski periods)**

## INFORMATION

Engadin St. Moritz  
T +41 81 830 00 01 | [www.engadin.ch](http://www.engadin.ch)



KULM HOTEL  
ST. MORITZ  
★★★★★



GRAND HOTEL KRONENHOF  
PONTRESINA  
★★★★★

summer dreams **come true**

Nested in the middle of the picturesque mountain landscape of the Engadine, 2 icons of Swiss hospitality have been delighting their guests since the beginning of Alpine tourism with unrivalled enjoyment and extraordinary experiences.

★★★★★

Thanks to our partnership with Corvatsch, Diavolezza and Lagalb, you exclusively benefit from advantages such as the Lunch on the Peaks offer, enabling half-board guests to experience the mountain restaurants for lunch or dinner.



Kulm Hotel St. Moritz · 7500 St. Moritz  
T +41 81 836 80 00  
info@kulm.com · www.kulm.com



Grand Hotel Kronenhof · 7504 Pontresina  
T +41 81 830 30 30  
info@kronenhof.com · www.kronenhof.com



**PARTNERHOTELS**

Piz Roseg 393





6 m      Piz Glüschart 3594 m      Piz Corvatsch 3451 m      Il Chapütschin 3387 m      Piz Tremoggia 3440 m      Piz Fora 3362 m



A. Rohweder  
03/2019

Tiefencastel, Chur



# CORVATSCH

## FAIRY-TALE MOUNTAIN SCENERY

### **Corvatsch – the raven**

CLEVER, BREATHTAKING, FREE AS A BIRD

In fables, the raven is often thieving and sly. Our Corvatsch steals only one thing: our hearts. The area spoils visitors with marvellous panoramic views, numerous sports possibilities and mouth-watering culinary treats. Whether a trip up the mountain with lunch at the top, a leisurely family hike or a challenging sport activity: there is something for everyone along the 80 km of hiking paths in the Corvatsch-Furtschellas region.

### **ETERNAL ICE AND SPARKLING LAKES**

The summer sports region nestles amidst spectacular panoramic

scenery. Towering up on one side is the mighty Bernina massif, with the snow-capped ice giants, the Piz Bernina and Piz Roseg, and the Corvatsch Glacier. On the other side, the view extends over the summery mountain peaks and the glittering lake-strewn landscape of the Upper Engadin.

### **DINING AND BARBECUING**

Five mountain restaurants serving local specialities ensure that guests do not leave hungry. There are also two well-equipped barbecue sites for hikers who prefer to cook the natural way.



# STUNNING HIKES

## The views of a thousand Alpine peaks

Hiking on Corvatsch-Furtschellas is so rewarding! The Water Trail is perfect for families, there is the Via Gastronomica for gourmets, and the Panoramic Trail for lovers of breathtaking views. A classic walk is the Hahnensee trail from Murtèl Middlestation to St. Moritz.

### HIKING PATHS

**FURTSCHELLAS MIDDLE STATION – MARMORÉ – SILS**

2 hours | 500 hm | easy

**FURTSCHELLAS MIDDLE STATION – LEJ SGRISCHUS – PIZ CHÜERN – FEX CURTINS – SILS**

5 hours | 400 hm | difficult

**MURTÈL MIDDLE STATION – PANORAMAWEG – PRUGNIEU – ALP PRASÜRA – SILS**

4 hours | 890 hm | medium

**MURTÈL MIDDLE STATION – FUORCLA SURLEJ – VAL ROSEG – PONTRESINA**

5 hours | 750 hm | medium

**MURTÈL MIDDLE STATION – FUORCLA SURLEJ – CHAMANNA COAZ**

3 hours | 150 hm | easy

**MURTÈL MIDDLE STATION – HAHNENSEE – ST. MORITZ BAD – LEJ MARSCH – SURLEJ**

4 hours | 930 hm | medium



The hiking map can be obtained at every valley station.



# PANORAMIC TRAIL

## High above the Upper Engadin lakes

With the lakes of the Upper Engadin on the right and the rocky crags and icy slopes of Corvatsch on the left, the Panoramic Trail boasts some truly outstanding views. It takes about 4 hours to walk along the well-maintained mountain path, through scented alpine meadows, from the Corvatsch middle station (2702 m) via Prugniew and Alp Prasüra to Sils (1797 m).

### FACTS & FIGURES

**WALKING TIME**  
approx. 4 hours

**DIFFERENCE IN ALTITUDE**  
890 m

**DIFFICULTY**  
a medium-difficult hike on  
well-maintained alpine paths



## OPENING TIMES

CHILDREN'S PLAYGROUNDS

end of June – 18.10.19

MINI ZOO

beginning of July – 18.10.19

# FUN & FAMILY

**Two playgrounds and a mini petting zoo awaiting the youngest guests.**

Young adventurers can let off steam not only along the hiking paths, but also at the playgrounds on the Corvatsch and Furtschellas.

## **FUN AND ACTION AT 2,312 METRES**

At the Furtschellas middle station, next to the La Chüdera restaurant, is a mini petting zoo. Children are welcome to touch, stroke and feed the dwarf goats, rabbits and chickens that live here. There is also a playground, offering plenty of entertainment possibilities.

## **HAVE A BARBECUE AT OVER 2,300 METERS**

Barbecue with a view of the lakes of

the Upper Engadin: only on Corvatsch. Along the route of the Water Trail there are two tempting barbecue sites. One overlooks the lakes of the Upper Engadin valley while the other is just beside the Lejin Rhodonit alpine lake. The barbecue sites are equipped with tables, benches, a metal grill and firewood. Bratwurst and cervelat sausages can be bought at the La Chüdera restaurant.

## **EDELWEISS BENCH**

Just a short way up from the Furtschellas middle station is the Edelweiss bench, designed to look like a row of aircraft seats, and offering breathtaking bird's eye views.



## WATER TRAIL

**Six small mountain lakes are scattered along the Water Trail, sparkling in myriad colours. In addition, two fully equipped barbecue sites invite hikers to stop for lunch on the lakeshore.**

The Water Trail is one of the hiking highlights on Corvatsch. The 2½ hour circular route leads from the Furt-schellas middle station, past six small lakes, and back again on the other side.

### **FINE FOOD AT 2,300 METRES**

At the departure point, the La Chüdera restaurant offers culinary delights as well as a spacious sun terrace. Those who prefer to stop for a rest along the way will find two barbecue sites at the Lejin Rhodonit, complete with

firewood, metal grille, tables and benches. Sausages can be purchased at the La Chüdera restaurant.

### **FAIRY TALE WATER TRAIL FOR THE LITTLE ONES**

The booklet, "Plitsch und Platsch", accompanies children along the route and entertains them with amusing stories. Ask for the booklet (in German only) at the ticket office of the Corvatsch or Furt-schellas valley stations.



FIRE PLACE

5. LEJIN S-CHAGLIA

4. LEJIN RHODONIT

6. LEJIN EPIDOT

FURTSCHELLAS  
START

3. LEJIN MALACHIT

1. LEJIN CRISTAL

2. LEJIN MAGNETIT

## WATER TRAIL

LEVEL OF DIFFICULTY

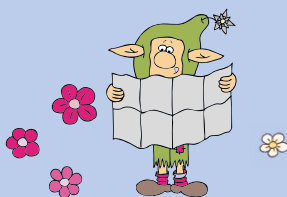
medium

DIFFERENCE IN ALTITUDE

333 m

HIKING TIME

2½ hours



Furtschellas



## VIA GASTRONOMICA

**The Via Gastronomica offers a variety of „courses“. You can choose your own route from the Furtschellas middle station down to the Fex valley, stopping at three specific restaurants along the way.**

The culinary trail begins with a powerful breakfast or a tasty starter at the La Chüdera restaurant. From here, it leads into the Val Fex, depending on the chosen route, either via a glacial lake and the mountain peak of the Piz Chüern or via Marmoré directly down to the Hotel Sonne Fex in Fex Crasta.

### HIKING AND FEASTING

The views en route change from the lakes to the over-strewn alpine meadows and the dreamy Fex valley. A delicious main course awaits you at the Hotel Sonne Fex. From here, you continue via Fex Platta, along the ruggedly romantic gorge path down to Sils Maria. At the idyllic village square you can tuck into a homemade dessert at the charming La Passarella.

**3. LA PASSARELLA  
DESSERT**

**FURTSCHELLAS  
START**

**1. LA CHÜDERA RESTAURANT  
BREAKFAST OR STARTER**

**BENCH "EDELWEISS"**

**2. HOTEL SONNE FEX  
MAIN COURSE**

## VIA GASTRONOMICA

### LEVEL OF DIFFICULTY

easy - medium - difficult  
depending on the chosen route

### HIKING TIME

depending on the chosen route  
2 - 5½ hours

### PRICE

CHF 52/person  
3 course menu in three restaurants,  
incl. cable car

### MARKINGS

red-white-red





## FINE FOOD

**Awaiting hikers, bikers, families and bon vivants are five restaurants, four sun terraces and two well-equipped outdoor barbecue areas.**

A slice of home-made fruit tart on their plate, the sun on their face and the Upper Engadin at their feet: the restaurants on the Corvatsch and Furtschellas treat guests to peak experiences for all the senses.

### **FESTIVE EVENTS AND INCENTIVES**

There are three venues for your celebrations or meetings: the Restaurant 3303, the restaurant Murtèl at middle station and the La Chüdera restaurant on Furtschellas. And the stunning Alpine landscape is thrown in for free.

### **SKYSHOP**

If you are still looking for souvenirs, you are bound to find something suitable in our new Skyshop up at the top station at 3303 m above sea level. But also at the valley station Surlej you will find various small presents.

### **INFORMATION**

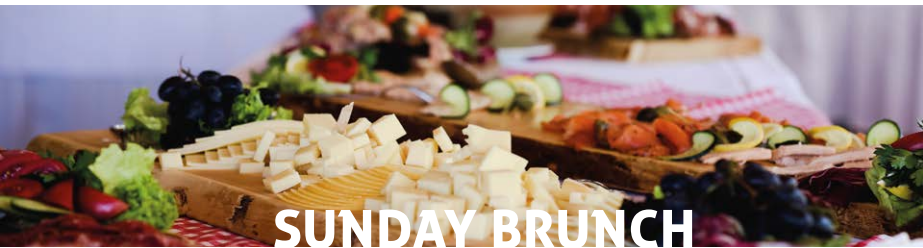
T +41 81 838 73 73 | [info@corvatsch.ch](mailto:info@corvatsch.ch)



## RESTAURANT 3303

The highest restaurant in Graubünden makes a meal of it. It's all about sweetcorn, or to be precise polenta, a distinctive local speciality. Restaurant 3303 offers two versions of this speciality in new interpretations: white polenta from Ticino, a mixture of white cornmeal and water, or typical „Polenta Taragna“ from the Valtellina, in which cornmeal is mixed with buckwheat flour and tasty cheese.

**INFORMATION & RESERVATION** T +41 81 838 73 60 | [gastro@corvatsch.ch](mailto:gastro@corvatsch.ch)



## SUNDAY BRUNCH

Lavish summit brunch in the Restaurant 3303. There is plenty of everything and you can eat as much as you like. Every Sunday from 9am until 12 am. (July until September). Reservation required until Friday evening.

**INFORMATION & RESERVATION** T +41 81 838 73 60 | [gastro@corvatsch.ch](mailto:gastro@corvatsch.ch)



## BISTRO MURTÈL MIDDLE STATION

The Bistro Murtèl is the ideal place to start and end your hike. The restaurant serves light snacks, freshly prepared meals, delicious coffee and refreshing beer. The sunshine terrace is a fabulous place to rest a while.

**INFORMATION & RESERVATION** T +41 81 838 73 83 | [gastro@corvatsch.ch](mailto:gastro@corvatsch.ch)



## LA CHÜDERA

The La Chüdera restaurant on Furtschellas is an insiders' tip for gourmets. Its a-la-carte restaurant, sunshine terrace and coffee bar make it an inviting place to spend some time. The panorama terrace has a magnificent view over the lakes.

**INFORMATION & RESERVATION** T +41 81 838 73 55 | [gastro@corvatsch.ch](mailto:gastro@corvatsch.ch)



## HAHNENSEE

Countless mountain paths lead to the restaurant. Idyllically situated on the Hahnensee the restaurant offers a first-class cuisine, a large sunshine terrace and captivating views of the Engadin mountain scenery.

**INFORMATION & RESERVATION** T +41 81 833 36 34



## FUORCLA SURLEJ

The rustic mountain hut is situated in one of the most beautiful spots in the Engadin. The view of the famous ice giants, the Piz Bernina and the Piz Roseg simply takes your breath away. It is the perfect place to sit back and relax with regional culinary delights.

**INFORMATION & RESERVATION** T +41 79 791 48 84



## CHAMANNA COAZ

You can enjoy the wonderful panorama, a fresh barley soup or a tasty piece of cake on the sun terrace. The SAC mountain hut offers accommodation for 80 people and is easily accessible on a hiking trail.

**INFORMATION & RESERVATION** T +41 81 842 62 78 | [www.coaz.ch](http://www.coaz.ch)



**Diavolezza 2978**

Corvatsch  Lagalb



# DIAVOLEZZA

**FAIRY-TALE MOUNTAIN SCENERY**

## **Diavolezza – the she-devil**

PASSIONATE, ICY HOT, DEVILISHLY  
BEAUTIFUL

Many years ago, Diavolezza, the beautiful she-devil lived high up on the mountain. Now and again, hunters would find her, follow her – crazed with love - and fall to their deaths. So it was with young Aratsch, after whose death, Diavolezza wailed pitifully: "mort ais Aratsch" – "Aratsch is dead". Her cry gave the Morteratsch Glacier its name. So the story goes.

If you like to feel the heat then the realm of the beautiful she-devil is

the place for you. The plateau overlooking the "Ballroom of the Alps" – including the glaciers, Piz Palü and Piz Bernina – is bound to provide some heavenly moments on the she-devil's mountain. Climbing fans love the two via ferrata routes, Trovat I and II. You will also find plenty of people with a burning passion for the Morteratsch Glacier Tour and the "Magical Fire above the Clouds" experience. Do not forget the jacuzzi at 3,000 metres and the Bernina Glaciers World of Adventure, with the Audio Tour Diavolezza and the Snow Climb Point.

## HIKING PATHS

DIAVOLEZZA TOP STATION – MUNT PERS – RETOUR

2.5 hours | 270 hm | easy

DIAVOLEZZA TOP STATION – SASS QUEDER – RETOUR

1 hours | 100 hm | easy

DIAVOLEZZA TOP STATION – LEJ DA DIAVOLEZZA

– DIAVOLEZZA VALLEY STATION

2 hours | 900 hm | medium

DIAVOLEZZA TOP STATION – LEJ DA LAS COLLINAS

– TALSTATION DIAVOLEZZA

3.5 hours | 1120 hm | easy

# STUNNING HIKES

## Welcome to the ballroom of the Alps

In the realm of the beautiful she-devil, there's the perfect walk for everyone. In addition to the guided glacier tour and the via ferrata, there are many routes of varying degrees of difficulty offering wonderful and varied ways to experience nature.



# BERNINA DIAVOLEZZA EXPRESS

This summer, the Bernina Express whisks travellers up to the Diavolezza mountain station at a dizzying altitude of 2,978 metres, where devilishly beautiful views of the legendary glacier world of the Bernina Range await.

**INFORMATION & RESERVATION** Railservice Rhätische Bahn | +41 81 288 65 65  
[www.rhb.ch/diavolezza](http://www.rhb.ch/diavolezza) | or at any manned RhB railway station

The **obligatory equipment** (climbing harness, fall arrest harness, helmet and gloves) can be hired for CHF 25 at the valley station.



**300 m of vertical distance, 500 steps, 600 m of steel cable, one aerial rope bridge and one 35 m long zipwire. An incredible scenery of ice and rocks to accompany you all the way!**

The first via ferrata follows a two-hour route up to the Piz Trovat (3,146 m), where, just a 20-minute walk from the Diavolezza top station, alpinists can enjoy a simple climbing experience. The route starts at around 2,850 metres above sea level, and after following the western buttress, leads to a small gorge (at 3,050 m) and on up to the summit. Here, after traversing around 500 steps, a ladder and a bridge, you can see the Bernina massif laid out below your feet. Climbers should be generally fit, sure-footed and have a good head for heights.

The more demanding variant of the via ferrata requires considerable strength and stamina, and long overhangs of up to 30 metres mean that mountain climbing skills are a must. Around halfway along the route, shortly before the rope bridge, the trail splits in two, with the new branch of the Y-shape leading up to the summit at 3,146 metres above sea level. From here, you can enjoy a sensational panoramic view of the furrow-edged Pers Glacier, the highest mountains in the eastern Alps and the icy peaks of the Bernina massif.



# BERNINA GLACIERS

## Perpetual ice, snow and thrilling stories

In the Bernina Glaciers world of adventure, there are some fantastic things to explore. It all begins at the valley station, with the Virtual Panorama Photopoint and the start of the Audio Tour Diavolezza. On the way from the valley to the summit, you learn about the exciting history of the Diavolezza in five instalments. At the top station, you will find the big viewing platform, the Cairn Garden and the Snow Climb Point. Clamber up the five-metre high heap of snow and pose for your summiter's photo.

**BERNINA-GLACIER-APP  
NOW FREE DOWNLOAD!**



### INFORMATION

Pontresina Tourismus

T +41 81 838 83 00 | [www.bernina-glaciers.ch](http://www.bernina-glaciers.ch)



## GLACIER HIKE

The only thing you need in order to tackle the spectacular tour from the top station Diavolezza across the Pers and Bernina Glaciers and back down to Morteratsch railway station are sure-footedness and sufficient stamina to cope with the 1,100 metres altitude difference. Here, amidst the largest mountain range in the eastern Alps, with the 4,049 metres high Piz Bernina in the middle, you can immerse yourself in the fascinating world of the glaciers that surround you on all sides. Some five billion tonnes of ice, covering a total distance of 12 kilometres and an altitude difference of 1,000 metres, creep lethargically down into the valley. The guided glacier hike provides an insight into a variety of na-

tural phenomena – from crevasses, to glacial mills and erratics, through to the formation of moraines.

### **GUIDED DAY TOUR**

of approx. 5 hours

### **SURE-FOOTEDNESS**

required

### **EQUIPMENT**

Hiking boots with ankle support and a good tread  
Long trousers  
Gore-Tex rainproof or windproof jacket  
Sunglasses / sun screen  
Gloves, walking sticks are advisable

### **REFRESHMENTS**

from the backpack

### **PARTICIPANTS**

min. 6 person, max. 15 person

### **PRICE (IN GROUP)**

Adults

CHF 70

### **INFORMATION & RESERVATION**

(until 4 pm the previous day)

Bergsteigerschule Pontresina

T +41 81 842 82 82 | [info@bergsteiger-pontresina.ch](mailto:info@bergsteiger-pontresina.ch)





## GLACIER TREKKING

### **GUIDED DAY TOUR**

of approx. 6 hours

### **SURE-FOOTEDNESS**

required

### **EQUIPMENT**

Equipment Crampons / ice-axe / belt  
Hiking boots with ankle support and a good tread  
Long trousers  
Gore-Tex rainproof or windproof jacket  
Sunglasses / sun screen  
Gloves, walking sticks are advisable

### **REFRESHMENTS**

from the backpack

### **PARTICIPANTS**

min. 3 person, max. 6 person

### **PRICE (IN GROUP)**

Adults

CHF 175

### **GOOD TO KNOW!**

Also suitable for families with children over the age of 12.

### **So close to Piz Palü**

From the Diavolezza top station, you walk along a rather narrow footpath past Piz Trovat to the Pers Glacier. After a short rest you set off, wearing crampons and secured with a rope, towards Piz Palü, passing right through the impressive „Cambrena Gap“. When you reach Crap Pers, you'll be rewarded with a vast panorama of the Pers Glacier.

### **INFORMATION & RESERVATION**

(until 4 pm the previous day)

Bergsteigerschule Pontresina

T +41 81 842 82 82 | [info@bergsteiger-pontresina.ch](mailto:info@bergsteiger-pontresina.ch)





## BERGHAUS DIAVOLEZZA

Enjoy a delicious evening meal at the Berghaus Diavolezza and then, when you go to bed, dream of the silence of the mountains, the starry sky or your sports day tomorrow.

Once the last cable car has gone back down to the valley, peace returns, up at 3,000 m above sea level. Gaze out in wonder now from behind the big glass windows of the mountain restaurant, and you will be enchanted by the tranquil evening atmosphere and the unique play of the light. The Berghaus Diavolezza offers rooms in several different categories.

### PRICE (06.05.19 - 18.10.19)

Double room «PLUS»	CHF 150
Double room «CLASSIC»	CHF 130
for groups (6/16 beds)	from CHF 80

### CHILDREN IN THE PARENT'S ROOM

0 - 6 years	CHF 15
7 - 12 years	50 % discount

### PRICE PER PERSON INCLUDES:

- lavish breakfast buffet
- 4-course dinner
- ascent and descent by cable car (except for 6-bed and group rooms)
- free parking at the valley station
- tourist taxes

### CRYSTAL-CLEAR VIEWS THANKS TO SWAROVSKI OPTIK

In the restaurant section of the terrace at the Berghaus Diavolezza, you can now borrow a SWAROVSKI OPTIK set of binoculars, free of charge.





Explore the diversified hiking trails during the day and then in the evening enjoy the peace and quiet on the she-devil's mountain and make plans for your next day – our attractive packages are simply fabulous.

#### GLACIER TOUR

(July to September 2019)

- 1 night at the Berghaus Diavolezza
- breakfast buffet
- cheese fondue dinner
- guided glacier hike to Morteratsch (in a group, Bergsteigerschule Pontresina)
- lunchpackage
- luggage transport to the Diavolezza valley station
- free parking at the valley station
- ascent by cable car Diavolezza

#### PRICE

per person

ab CHF 190

#### MIDWEEK

(06. - 18.10.19)

- 4 nights at the Berghaus Diavolezza (Sunday-Thursday)
- breakfast buffet
- 3x 4-course dinners
- 1x cheese fondue dinner
- 1x outdoor jacuzzi
- free parking at the valley station
- unlimited valley and mountain rides on the Diavolezza cable car
- free travel on all Upper Engadin mountain railways

#### PRICE

per person

ab CHF 300

#### INFORMATION & RESERVATION

Berghaus Diavolezza | T +41 81 839 39 00 | [berghaus@diavolezza.ch](mailto:berghaus@diavolezza.ch)



Choose between the à-la-carte restaurant or the self-service section, between regional specialities from Graubünden and the Valtellina, and fast-food classics. At the Berghaus Diavolezza, you'll find devilishly good food and heavenly hospitality. While enjoying a breathtaking view.

**INFORMATION & RESERVATION** T + 41 81 839 39 00 | [berghaus@diavolezza.ch](mailto:berghaus@diavolezza.ch)



Equipped with picnic basket, wood, meat and anything else you could wish for at a barbecue, you will reach Europe's highest barbecue site at 3,066 metres above sea level on foot within 40 minutes.

**Price for 2 persons**      CHF 130 (incl. transport)  
                                  CHF 90 (excl. transport)

**INFORMATION & RESERVATION** T + 41 81 839 39 00 | [berghaus@diavolezza.ch](mailto:berghaus@diavolezza.ch)



<b>PRICE</b>	
per person*	CHF 29
Hire swimming trunks	CHF 5
<b>INCLUDING</b>	
bath towel, robe, ice water and fruits	
*reservation required	

### Icy hot relaxation at 3,000 metres above sea level.

A jacuzzi at 3,000 metres – how cool is that! The whirlpool tub takes centre stage on the sunshine terrace of the Berghaus Diavolezza and envelops you in a luxuriously warm 41 degrees. You can enjoy the views of the Bernina massif and the Piz Palü for as long as you like.

**INFORMATION & RESERVATION** Berghaus Diavolezza | T +41 81 839 39 00 | [berghaus@diavolezza.ch](mailto:berghaus@diavolezza.ch)

## OUR PARTNERS





# EVENTS SUMMER 2019

## **07.07. – 29.09.2019 SUNDAY BRUNCH AT 3,303 METRES**

Every Sunday from 9am to 12 am. Enjoy a lavish summit brunch with stunning views at the Restaurant 3303. Reservation required until friday evening.

## **01.08.2019 1. AUGUST BRUNCH**

Start the Swiss National Day in style with a mouth-watering brunch in the La Chüdera restaurant on Furtschellas. The view over the lake-strewn landscape of the Upper Engadin also creates a festive mood.

## **01.08.2019 QUIET 1. AUGUST FOR YOU AND YOUR DOG**

Enjoy the 1<sup>st</sup> of august peacefully without the noise of fireworks at the Berg-  
haus Diavolezza, attended by the dog trainer Kirsten Bollinger.

## **15.08.2019 CHURCH SERVICE IN THE MOUNTAINS**

The church service on the Furtschellas to celebrate Assumption Day, complete with fantastic views, is a very special experience.

## **13.10.2019 BARBECUE AT FURTSCHELLAS**

Finish off the summer season with a delicious barbecue, live music and a fairy-tale panoramic view.

**FURTHER EVENTS AND INFORMATION** [www.corvatsch.ch](http://www.corvatsch.ch) | [www.diavolezza.ch](http://www.diavolezza.ch)  
Programme subject to change.

**OPENING HOURS WINTER 19/20****CORVATSCH STATION SURLEJ**

23.11.19 – 26.04.20

**CORVATSCH STATION SILS**

18.12.19 – 13.04.20

 **DIAVOLEZZA**

19.10.19 – 22.11.19 | 18.12.19 – 03.05.20

**LAGALB**

18.12.19 – 13.04.20

# PREVIEW WINTER 2019/20

**In this fairy-tale mountain world, there's lots to explore in winter, too.**

## **CORVATSCH**

Corvatsch has everything to get excited: challenging slopes and family-friendly ones, the longest floodlit ski slope in Switzerland, one of the best snow parks in the Alps, the Fun Ride, varied restaurants, stunning panoramic views and the highest cable car station in Graubünden. And on top, there are first-class events such as the Freeski World Cup and the big Spring Concert.

## **DIAVOLEZZA**

The realm of the beautiful she-devil boasts not only an amazing range of ski slopes but also all kinds of different off-piste routes, the longest glacier run in Switzerland and the Diavolezza Chal-

lenge, a signposted and safe ski touring route. You can enjoy a varied range of fine food in the two restaurants, lift your spirits by gazing at fantastic views of the ice giants or join in one of the highlights „Glüna Plaina“ – skiing by the light of the full moon.

## **LAGALB**

With its fantastic views of Lago Bianco and down into the Poschiavo valley, the Lagalb skiing area is an insiders' secret. The steep descents and undulating slopes make the Lagalb the experts' mountain in the Engadin. Those who want to take it easy can enjoy the traditional charms of the two restaurants. Anyone who really wants to test themselves should attempt the Club 8848 challenge.

# The best pistes from 45.- Swiss francs.



Simply purchase your ski pass online  
or directly with your accommodation  
**[www.snow-deal.ch](http://www.snow-deal.ch)**

***Snow-Deal***

**BOOK EARLY AND BENEFIT.**



**Hotel +  
Skipass**

## GENERAL TERMS AND CONDITIONS

These terms and conditions are applied to all services and products of Engadin St. Moritz Mountain Pool (ESMP). ESMP includes the transport systems for the following snow sports and excursion areas: Corvatsch/Furtschellas, Corviglia/Piz Nair, Diavolezza/Lagalb, Muottas Muragl, Zuoz, Pontresina/Languard, Samedan, La Punt, Maloja, S-chanf.

**TICKETS AND PASSES Validity** – All tickets and passes are personal and not transferable. They are only valid during the normal published operating hours and for the booked period. **Loss or theft** – In case of loss or theft of a pass with a validity period of 2 days or longer, a replacement will be issued on one occasion only and upon presentation of the sales receipt and an official identity document. The replacement card will incur a processing fee of CHF 15. **Misuse and forgery** – Misused and forged tickets and passes will be confiscated. Tickets and passes that are in use but which are not suitable to be used can be withdrawn. The user will have to pay an administration fee of CHF 150. The right is reserved to take civil or criminal enforcement measures. **Exchanges and refunds** – Tickets and passes may not subsequently be exchanged for other tickets or passes. For day and multi-day tickets, generally no refund can be claimed. In the event of illness or accident, reimbursement of season/year passes and day-choice-tickets can only be claimed on presentation of a medical certificate of a doctor resident in the Upper Engadin for the period of validity of the subscription. Generally, the calculation of the refund amount will be based on the medical certificate. If the pass is used again at a later date, any claim for a refund will be reduced in line with the date of last use. Tickets valid for one day or less will not be refunded. Any refund claims must be made within 30 days after the event occurs, or, in the case of annual passes, before the expiry date thereof. The customer is free to purchase a corresponding insurance cover from the companies of the ESMP or third parties. The customer is not entitled to a refund in cases where the services are completely or partially interrupted due to bad weather, technical problems, power outages, for reasons of safety or force majeure (e.g. avalanches), or similar. **Tariffs** – The current relevant tariff regulations and the information as to the applicability of tickets and passes are published on [www.engadin.stmoritz.ch/berge](http://www.engadin.stmoritz.ch/berge).

**Data carriers** – The customer may be required to purchase a reusable electronic data carrier for contactless access to facilities and pistes. In return, ESMP undertakes to buy back, at the same price and at any point of sale, any undamaged data carriers within 72 hours after expiry of the validity of the ticket or pass it contains.

**EXCLUSION FROM TRANSPORT General** – Any person may be excluded from transport who: is drunk or under the influence of drugs; behaves in an improper manner or who does not follow the rules of conduct, or the provisions governing use, or instructions from staff based on these. In cases of recurrence or in serious cases, revocation of the ticket or pass may ensue.

**Transport to sports activities** – Persons may be excluded from transport to sports activities in cases where weather conditions are not suitable for engaging in such sports activities, especially where there is avalanche risk. Persons may also be excluded from transport to sports activities if they endanger third parties immediately prior to such transport and there is reason to believe that they will continue to endanger third parties. A person especially puts third parties in danger when such a person: behaves recklessly; goes onto a slope that is exposed to avalanches; disregards safety related instructions and prohibition notices; defies safety related directives by supervisory and rescue services. The foregoing list is not exhaustive. The transport of sports and leisure equipment can be excluded in particular for technical reasons, safety issues or to abide by overriding provisions.

**PICTURES AND VIDEO FILES** It should be noted that for purposes of operational security and access controls pictures can be taken and video files can be created. **LIABILITY** To the extent permitted, the liability of ESMP and the affiliated enterprises to negligent and culpable conduct is limited.

**RESCUE SERVICES** Should the customer have an accident in the area covered by ESMP and, as a result, the emergency services have to be summoned, the customer will be invoiced for the costs (labour, materials and costs of third parties) incurred. Third party costs (e.g. Rega, doctor) are to be paid directly by the customer. Customers should make any claims for refund directly to their insurance providers.

**PRIVACY** By purchasing a ticket and/or opening a customer profile or subscribing to a newsletter of one of the companies of the ESMP, the customer actively agrees that the companies of the ESMP save the personal, sales and usage data and can use it for statistical and promotional purposes. Upon request, the customer has the right to view, correct and – if these are not required by law or according to the conditions mentioned above – to have deleted the data saved on his profile.

**APPLICABLE LAW AND PLACE OF JURISDICTION** This contract between the customer and ESMP is exclusively subject to Swiss law. The exclusive place of jurisdiction is St. Moritz.

### LEGAL NOTICE

Editor: Corvatsch AG.

Graphic design: SiDe concept & design.

Illustration: Nicole Klarer.

Photo: Gian Andri Giovanoli, Andrea Badrutt, Romano Salis. Chamanna Coaz, RhB.

Prices, services and offers are subject to change.

© March 2019, Corvatsch AG

## Corvatsch AG

Via dal Corvatsch 73 | CH-7513 Silvaplana  
T +41 81 838 73 73 | [info@corvatsch.ch](mailto:info@corvatsch.ch) | [www.corvatsch.ch](http://www.corvatsch.ch)

## Diavolezza Lagalb AG

Talstation Diavolezza | CH-7504 Pontresina  
T +41 81 838 73 73 | [info@diavolezza.ch](mailto:info@diavolezza.ch) | [www.diavolezza.ch](http://www.diavolezza.ch)

